



The **UST SLIDING DRAWER mod. SL-6050** is an innovative solution that enables to install a UST video projector very close under a projection screen. When needed for the projection, you can manually pull out the drawer to bring the projector in the projection position up to **the maximum extension of 25 cm**. After you finished the projection session push the cart in closed position for a tidy solution.

Easy to install and to operate, this sliding drawer offers a great solution to install an UST projector occupying a minimum space on the furniture, ideal for Home Cinema installations.

The drawer can support projectors up to **12 kg** and of a **maximum dimensions of 600x480 mm (WxD)**.

Standard colour **BLACK**.

**Height** UST SLIDING DRAWER mod. SL-6050: **70mm**.

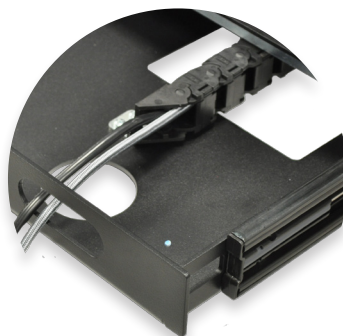


*Optional: WHITE finishing*

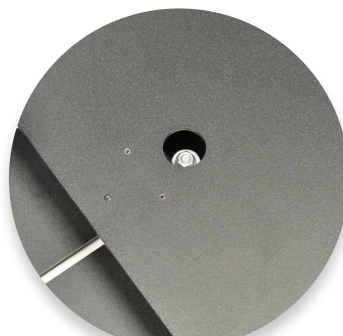
Cables entry/exit



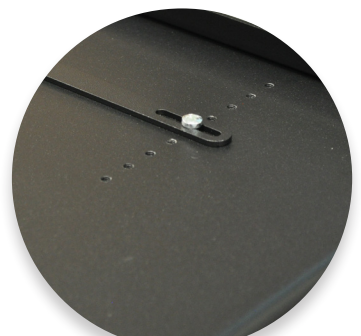
Cable management system



End stop adjustment screw

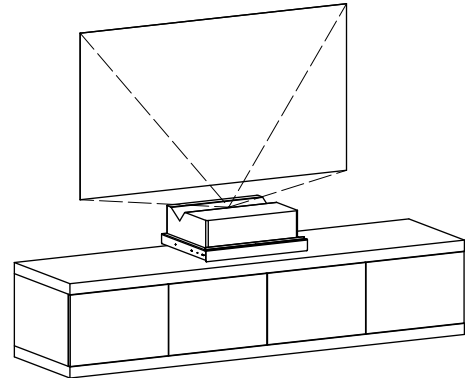
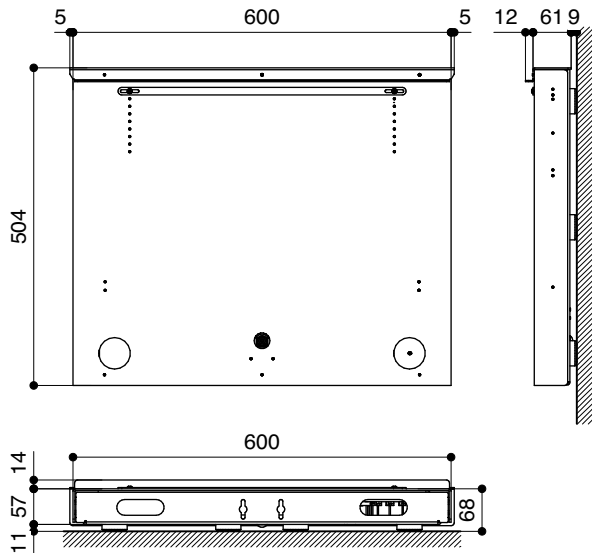


Videoprojector adjustment plate



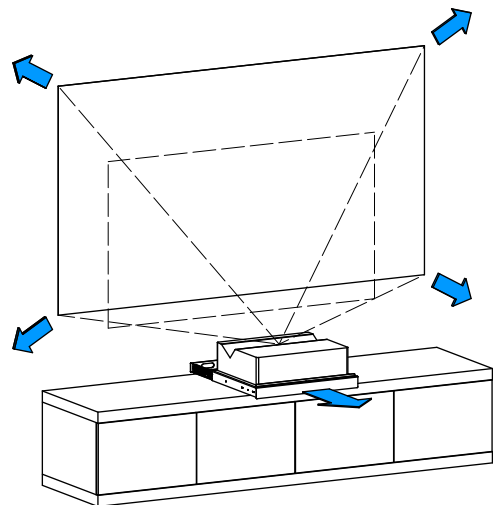
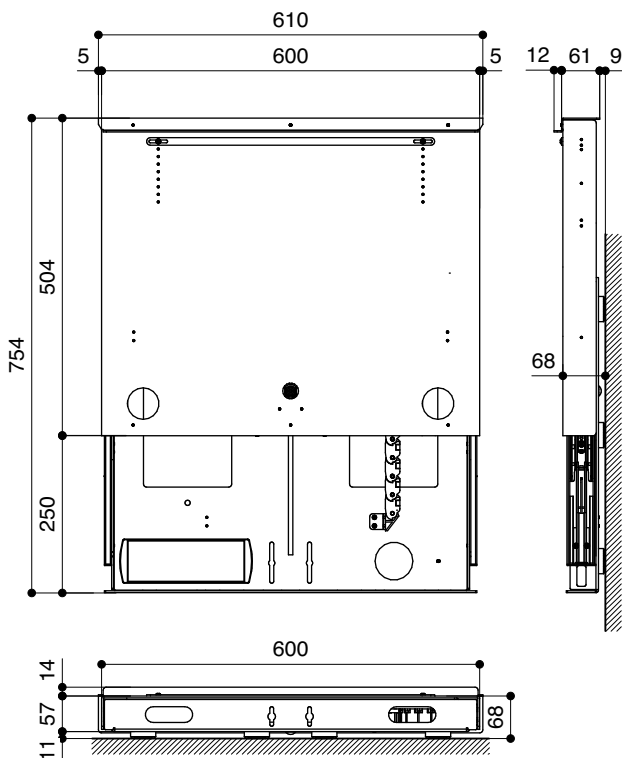
## UST - SLIDING DRAWER MOD. SL-6050

### TECHNICAL SPECIFICATIONS - CLOSED



## UST - SLIDING DRAWER MOD. SL-6050

### TECHNICAL SPECIFICATIONS - OPEN



The measures in the drawings are expressed in millimetres.

Warranty: 24 months

